



SmartKing™ industrial power supply 12V / 11,5 A with charger



CHARACTERISTICS

- High-quality stabilized switching power supply 12V / 11A
- Secondary and primary protection against overvoltage and short circuit
- Selectable mains input voltage range 85~132 or 170~264VAC
- Adjustable output voltage +/- 5%
- Green LED indication when DC output available
- Built-in trickle charger for rechargeable batteries
- Automatic ripple-free switchover to battery power in case of mains power failure
- Output signal if transition to battery voltage.
- Output signal when battery low.
- Automatic low battery switch off to prevent deep discharge
- Input to start battery discharge
- Produced according to RoHS standard (restriction Hazardous Substances Directive)
- 5 year warranty

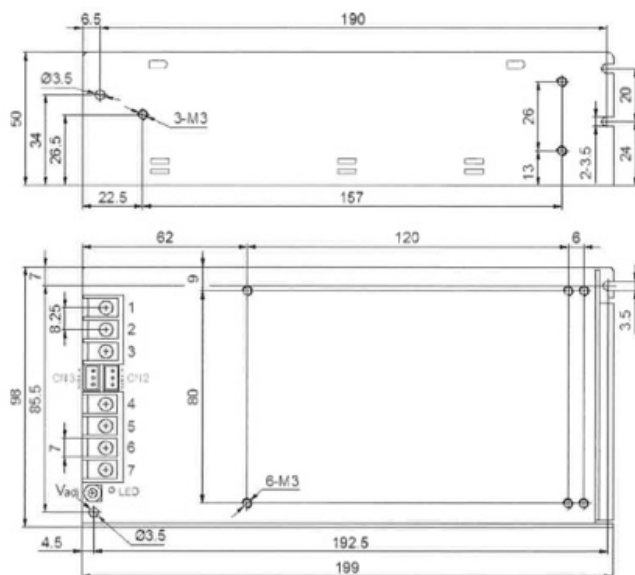
DESCRIPTION

- The SmartKing™ stabilized switch power supplies are available in 12Vdc and 24Vdc. The built-in battery charger takes care of the rechargeable battery. Ripple-free automatic switch to battery power during mains power failure. Outputs provide signalling of “battery low power” and “mains power loss”. The power supply features an input to manually start a battery discharge. The adjustable output voltage can compensate for power losses due to cable length. Produced RoHS, safety and EMC standards EN60950 standard 61000 (3-2,3) (4-2,3,4,5,6,8,11). Delivery excluding batteries in perforated steel / aluminium housing with mounting plate.

TECHNICAL CHARACTERISTICS

- Input voltage: 85~132/170~264VAC switchable
- Input current: 3.6A/115V, 1.8A/230V
- Input frequency: 47~63Hz
- Inrush current: cold start, 20A/115V, 40A/230V
- Input leakage current: < 0.7mA/230VAC
- Line regulation (full load): ± 0.5%
- Voltage adjust range: V1: ± 5%, V2: not adjustable
- Output overload protection: 110~130%, shut-off, re-power on to recover
- Output over voltage protection: 115~150%, shut-off, re-power on to recover
- Short circuit protection: shut-off, re-power on to recover
- Rise time: 50ms @full load (typical)
- Hold up time: 20ms @full load (typical)
- Mechanical feature: enclosed

- DC output indication: green LED on when DC output available
- Dimensions: 199 x 98 x 50 mm
- Operating temperature: -10°C ~ +50°C
- Storage temperature: -20°C ~ +85°C
- Operating humidity: 20°C ~ 93°C RH (non condensing)
- Storage humidity: 20°C ~ 95°C RH (non condensing)
- MTBF: >100,000 hours
- Cooling: convection
- Safety standards: GB4943, UL60950, EN60950
- EMC standards: GB9254, EN55022 Class B, EN55024, EN61000-3-2,3, EN6100-4-2,3,4,5,6,8,11
- Withstand voltage: I/P - O/P: 3.0 KVAC/1min, I/P - F/G: 1.5 KVAC/1min, O/P - F/G: 0.5 KVAC/1min
- Vibration: 10~150Hz, 2G 10min/1 cycle, 30min each along X, Y, Z axes
- Connection: 7P/8.25mm pitch terminal block
- Packing: 0.78 kgs, 24 pcs / 19.5 kg / 0.045 CBM per carton



Length of assembly screw: max. 6mm

Terminal Pin No. Assignment

Pin No.	Assignment	Pin No.	Assignment
1	AC/L	4,6	COMMON "-" of DC & BATTERY OUTPUT
2	AC/N	5	BATTERY "+*" POLE
3	FG	7	DC OUTPUT +V

CN2 Pin No. Assignment

Pin No.	Assignment
1	Battery low signal (low level < 0.7V when battery works normally, high level > 3V when battery low. The battery will be switched off immediately when it gives the battery low signal.)
2	GND
3	AC mains failure signal (low level < 0.7V when AC power on, high level > 3V when AC mains fails)

CN3 Pin No. Assignment

Pin No.	Assignment
1,2,3	Compulsive battery discharge triggering connector: you may link pin 1 (or pin 2) and pin 3, then connect to an outside switch for compulsive discharge of the battery.

ORDER INFORMATION

- PS213812 - SmartKing™ industrial power supply 12V / 11,5 A with charger