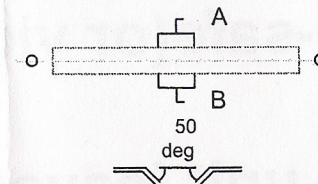


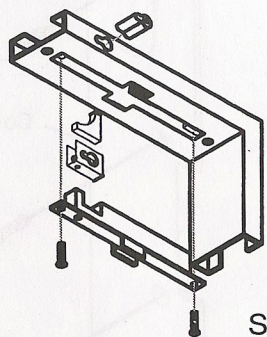
Close the door. Mark the glass door thickness on the header (or frame for vertical mounting). Open door and draw the centerline of the door thickness. Align the strike template centerline on the door centerline and fix with adhesive tape.

STEP 1

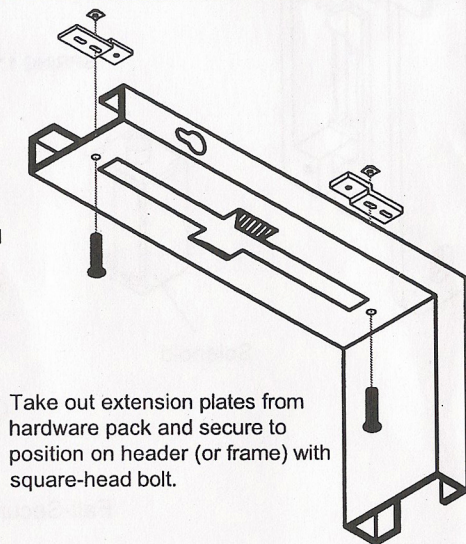


Cut along the dotted lines of the template. Push the 2 flaps into the header (or frame) along the until the angle is about 50°. Fold cylinder lock template along dotted line and align with header. Move horizontally to match location of strike template. Fix with adhesive tape. Drill hole to accommodate cylinder lock. Note: Cylinder lock distance from header edge can be adjusted according to template directions.

STEP 2



STEP 5-1

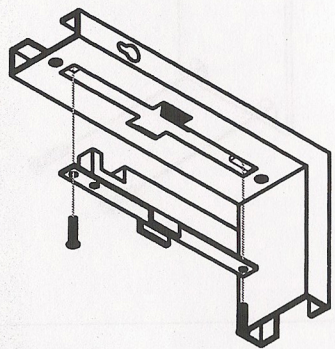


Take out extension plates from hardware pack and secure to position on header (or frame) with square-head bolt.

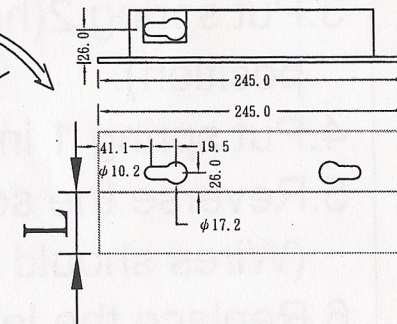
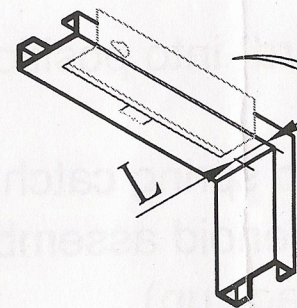
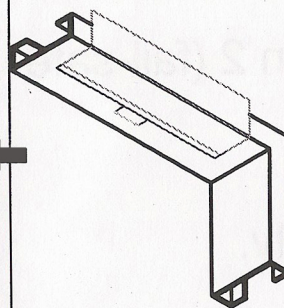
WIRING CONNECTION		
12VDC	24VDC	LOCK STATUS
Red	Red	Yellow
Black	Black	White
Blue	Blue	Blue
White	White	
	Varistor	NO
		COM
		NC

NOTE: LOCK STATUS SENSOR: UNLOCK POSITION

STEP 4



STEP 5-2



※If no cylinder lock(option)is used skip this part. Use a piece of paper and cut to size indicated. Put one edge of paper along the door centerline and fold. Mark out the cylinder lock position as per drawing. Place paper on header (or frame) and drill 10.2mm/17.2mm (0.4/0.65in) holes. Remove part in between.

STEP 3